

CLAVICLE SOLUTIONS



Made in Austria

VERSATILE SOLUTION FOR

The **ITS. Clavicle Locking Plates System** is a proven osteosynthesis system for various fractures of the clavicle. With this technology, an anatomical reduction can be achieved and fixed until healing.

Although all plates are anatomically pre-contoured, they can be further contoured intraoperatively, to achieve the best anatomical fit for each individual patient.



○ Anterior Clavicle Plates



- Multidirectional Locking
- Anatomical Plate Design
- Recon Design facilitates individual contouring
- Sliding hole with compression option of up to 7mm
- Tapered plate ends and edges minimizes soft tissue irritations

- Staggered & pre-angled plate holes for optimal fixation in the flat lateral area
- The IO-hole and lateral variants are adapted to the clavicle both horizontally and vertically

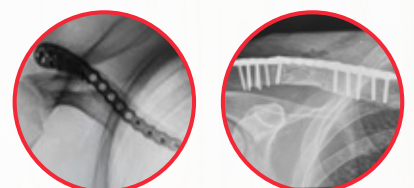


○ Superior Clavicle Plates **LATERAL**



- Multidirectional Locking
- Anatomical Plate Design
- L & R Version / Lengths: 4 & 6-Hole
- Wide lateral section for holding several screws
- Pointed medial plate end for percutaneous insertion (long plate)

- Lateral 25% narrower
- Recon Design facilitates individual contouring
- Smaller holes in lateral area to accommodate greater number of screws
- Lengths: 6, 8, 10-Hole



OR CLAVICLE FRACTURES

○ Superior Clavicle Plate **MEDIAL**

- Multi-directional Locking
- Anatomical Plate Design
- Turn 180° for right and left versions
- Bridging middle section for additional strength, which covers the breaking point
- Lengths: 6, 8, 10-Hole Optional: 12-Hole



○ Clavicle Hook Plate

The new **Clavicle Hook Locking Plate System (CHLP)** provides reliable fixation for fractures of the lateral clavicle and acromioclavicular joint injuries.



- Multi-directional Locking
- Anatomical Plate Design
- Oblong hole for up to 3.5mm compression
- Anatomically curved shaft to align with shape of distal clavicle
- Low profile plate with rounded edges for reduced risk of soft tissue irritation
- Hook angle and position designed for optimal fit under acromion
- Increased hook cross section for maximum strength
- Smooth narrowing of plate from distal to the shaft allowing for placement of four distal screws

The plate is available in 5-, 7-, and 9-hole versions, with 6- & 8-hole options upon request. Additionally, three hook depths of 12mm, 16mm, and 20mm are offered.

12mm — ○
16mm — ○
20mm — ○



Adhering to the technology principles of all I.T.S. plates, this system offers the option of polyaxial locking capabilities in all screw holes (except oblong). The free choice of screw placement provides surgeons with the flexibility to select the most suitable screw type and angle, enabling optimal fixation of the clavicle and ensuring maximum support, even in cases of poor bone quality.

Disclaimer:

The intended users are limited to medical personnel with appropriate product training by the medical product consultants or knowledge of the surgical procedure to be applied. The medical staff must ensure that the use of I.T.S. GmbH medical devices is appropriate, taking into account the medical condition and medical history of the patient. Prior to product use, medical personnel must refer to complete information on product label and in IFU, including, but not limited to, indications, contraindications, warnings and preventative measures, and cleaning and sterilization instructions. Product availability is dependent on country registrations and clearances. For more information, please visit www.its-implant.com or contact us at office@its-implant.com. Unless otherwise noted, all information herein is the intellectual property of I.T.S. GmbH.



HEADQUARTER

I.T.S. GmbH
Autal 28, 8301 Lassnitzhöhe, Austria
Tel.: +43 (0) 316/ 211 21 0
office@its-implant.com
www.its-implant.com



Order No. CLS-BIC-I224-EN
Edition: December/2024

© I.T.S. GmbH Graz/Austria 2024
Subject to technical alterations,
errors and misprints excepted.

ITS.
Implants for Trauma Surgery



www.its-implant.com



ITS. GmbH



ITS. Implants



[its.implants](https://www.instagram.com/its.implants)